

DISCOVER WORCESTER



PLACES SO GOOD, WE HAD TO SHARE

AN UNOFFICIAL
GUIDE BY THE
UNIVERSITY OF WORCESTER



Welcome to the fifth edition of our independent guide to the best of Worcester.

It's not an exhaustive list, but a snapshot of hand-picked places our students love. We hope you enjoy it!

We want to help you explore this wonderful city and enjoy the kind of places that only locals know about.

Follow our student blog to find out more about student life:

worcesterstudentlife.com



Follow us on Twitter
https://twitter.com/worcester_uni



Like us on Facebook
www.facebook.com/UniversityOfWorcester

All information is correct at time of printing.



Whether you're just visiting or you're starting your studies at the University of Worcester, **we want you to experience the character and charm of the city we call home.**



Feeling at home in the city is key to settling in at university. The following pages bring you just a selection of great local places, recommended by our current students.

WE ASKED THEM TO TELL US ABOUT THEIR FAVOURITE PLACES TO EAT, SOCIALISE AND RELAX. THERE WERE SO MANY WE COULDN'T FIT THEM ALL IN, BUT WE HOPE YOU'LL LIKE THE HIGHLIGHTS.

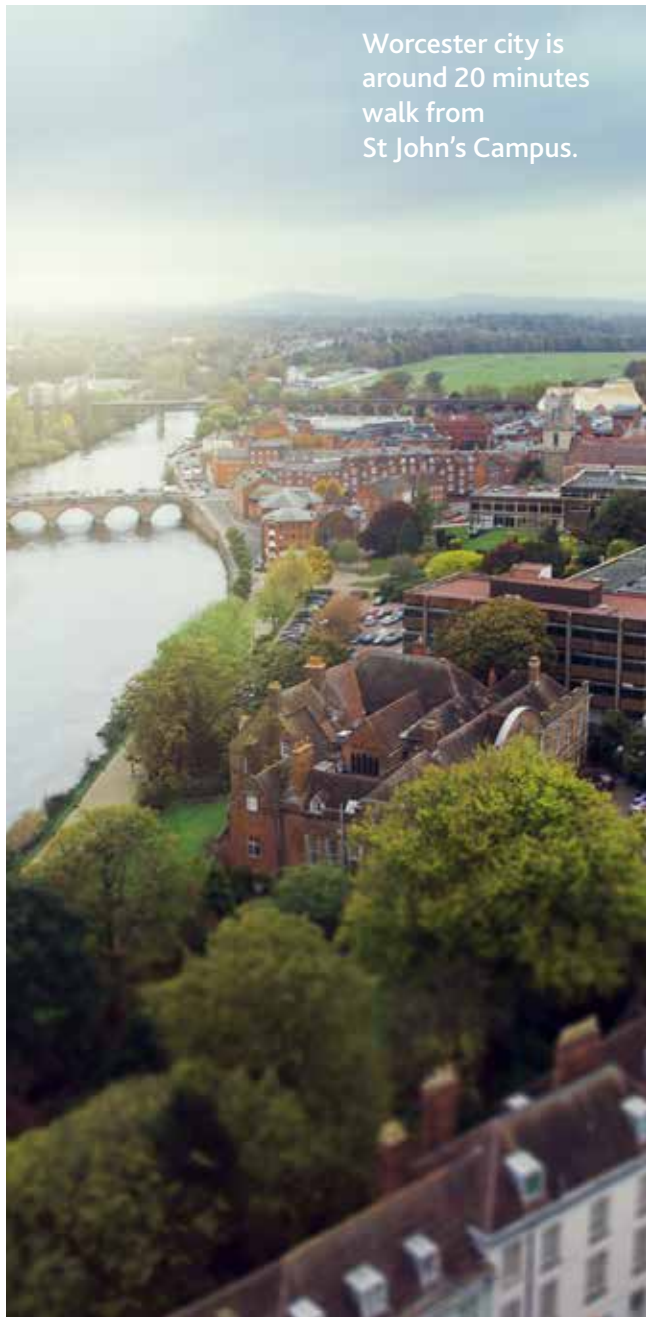


As a student at the University of Worcester you can use all the University's sites, giving you access to a huge range of study spaces, sports facilities, cafés and specialist resources. We'll make a note of all the different options throughout the guide so that you can make the most out of our campuses – keep reading and we'll tell you all about them too.

A CITY THAT'S FULL OF SURPRISES

Dragon Boat Race

Worcester city is
around 20 minutes
walk from
St John's Campus.



PLACES TO EAT

Here are our favourite places
for eating – it's all about good
food, a relaxed atmosphere
and student-friendly prices.

Find your way around using
our map on page 45.

Chesters

7 This bright, colourful
restaurant serves up a mixture of
burritos, chillies, fajitas and other
traditional Mexican dishes.

51 New Street, WR1 2DL,
01905 61163

Chung Ying Garden

2 A traditional Cantonese and
Vietnamese restaurant with
friendly staff. On Fridays and
Saturdays their special lunch
menu is great value for money.

50 Friar Street, WR1 2NA,
01905 22972

Thai Gallery

3 Great for good value
lunch options, like yummy
Pad Thai noodles.

26-32 Friar Street, WR1 2LZ,
01905 25451

Bodega

4 Offering South American food
and popular cocktail evenings,
this new restaurant is right next
to Foregate Street Train Station.

14 Foregate Street, WR1 1DB,
01905 22200



Saffrons Bistro

5 One of the most popular
restaurants in Worcester, Saffrons
also has a good value lunch menu.

15 New Street, WR1 2DP,
01905 610505



The Old Rectifying House

6 This traditional building overlooks the River Severn. There's also a separate lounge bar and an outdoor seating area for the summer.

4 North Parade, WR1 3NN, 01905 619622

Pasha, Spice Cuisine, Delhi 6

7 Three curry restaurants close to St John's Campus.

Pasha 56 St John's, WR2 5AJ, 01905 426327

Spice Cuisine 39 Bromyard Terrace, St John's, WR2 5BW, 01905 429786

Delhi 6 5a St John's, WR2 5AE, 01905 422228



Benedictos

8 Authentic Italian and Sicilian cuisine.

34 Sidbury, Worcester, WR1 2HZ, 01905 21444

Flames World Buffet

9 Indian, Thai, Italian and Chinese food, all in one buffet!

19 The Foregate, Worcester, WR1 3QF, 01905 617797

Burgerworks

10 Locally sourced burgers using Herefordshire beef.

12 Friar Street, Worcester, WR1 2LZ, 01905 27770



Photo credit: Burgerworks

Slug and Lettuce

11 Everything from quick snacks to big breakfasts, after-work nibbles to full-on three course dinners. Fantastic deals too! (50% off food on Mondays.)

The Cross, Worcester, WR1 3PY, 01905 729211

Nando's

12 A popular chain with a Portuguese/Mozambican theme.

55-59 Friar Street, WR1 2NA, 01905 731797

Diglis Hotel

13 With a riverside location this is perfect for al fresco dining in the summer months.

Severn Street, Worcester, WR1 2NF, 01905 353518



Bill's

14 A popular venue in the heart of the busy Crowngate shopping centre.

Crowngate Shopping Centre, Worcester, WR1 3LD, 01905 21095

Primo Bar & Dining

18 New to Worcester, this venue has a Glass Bar at the top of the building, offering views over Worcester Cathedral.

55 Sidbury, WR1 2HU, 01905 611566

Coffee Dough

19 Take a break from your shopping and watch the world go by in this petite, glass-fronted coffee bar.

Chapel Walk, Crowngate Shopping Centre, WR1 3LD.

Francini Café de Colombia

20 Nice atmosphere and good food. Amazing waffles!

14 Angel Place, WR1 3QN.

Creams Café

21 If you love desserts, Creams is the perfect place for you. A range of crepes, waffles and authentic Italian gelato are a few of the desserts on offer to satisfy your sweet tooth.

1-3 Nicholas Street, WR1 1UW.

G&Tea

15 G&Tea have a selection of 14 loose-leaf teas, homemade cakes and scones for traditional afternoon tea as well as breakfast and lunch menus.

G&Tea, 45 Friar Street, WR1 2NA, 01905 863323

Ginger Pig Café

16 This café offers free-range breakfasts, delicious home-made lunches and Fairtrade coffee and cakes.

9 Copenhagen Street, WR1 2HB, 01905 338913

Ruby Cantonese

17 Buffet restaurant and takeaway located in the heart of St John's.

38 Bransford Road, WR2 4EP, 01905 425666



**"Worcester is
a very beautiful
place to live
and study,
I love it here."**

Milko Hadzhigenov

PLACES TO CATCH UP WITH FRIENDS

"Worcester, for me, is the perfect size. I like roaming the city centre, exploring the shops and visiting the cafés and pubs. It's a real student city."

Taylor Cornes

The Pear Tree, Students' Union

22 If you're looking for somewhere to take a break between lectures, or relax and enjoy yourself in the evenings, the Students' Union Pear Tree Bar is the ideal place. From cocktails to coffee and hot snacks served during bar opening times, there's something for everyone.

St John's Campus, WR2 6AJ

Starbucks, City Campus

23 Apart from the famous Starbucks coffee, this place has a friendly atmosphere and makes a handy sandwich stop.

Infirmary Walk, WR1 3AS

Papa's Caffè

24 Breakfast/brunch options and light snacks are offered at this coffee house as well as ice fruit drinks, milkshakes, ice teas and frappés.

6-8 New Street, Worcester, WR1 2DN, 01905 617783



The Hive Café

25 The Hive library has its own great café on the ground floor. They serve a selection of snacks and it's a handy spot for study breaks.

The Hive, Sawmill Walk, The Butts, Worcester, WR1 3PB

MFA Bowl

26 MFA Bowl is a short walk from St John's Campus. Offers include £2 a game with a student card as well as cheap drinks and food.

Everoak Estate, Bromyard Road, Worcester, WR2 5HN



Boston Tea Party

30 Using only free-range meat and eggs sourced from West Country suppliers, the Boston Tea Party serves up freshly prepared breakfasts, light lunches and cakes with an extensive collection of loose-leaf teas.

18 Broad Street, WR1 3NF, 01905 26472

Caffe Bolero

31 This place gets great reviews from students and locals for its food, service, atmosphere and value for money.

2-4 Nicholas Street, WR1 1UW, 01905 24548

Patisserie Valerie

32 This patisserie comes highly recommended for their range of sweet and savoury treats.

68 Broad Street, WR1 3LY, 01905 27623

Mac & Jac's Café – Deli

27 This independent, family run café-deli stocks a range of breads, cakes and pastries as well as hosting popular supper evenings.

44 Friar Street, WR1 2NA, 01905 731331

The Balcony Café

28 At City Art Gallery & Museum Foregate Street, WR1 1DT, 01905 724488

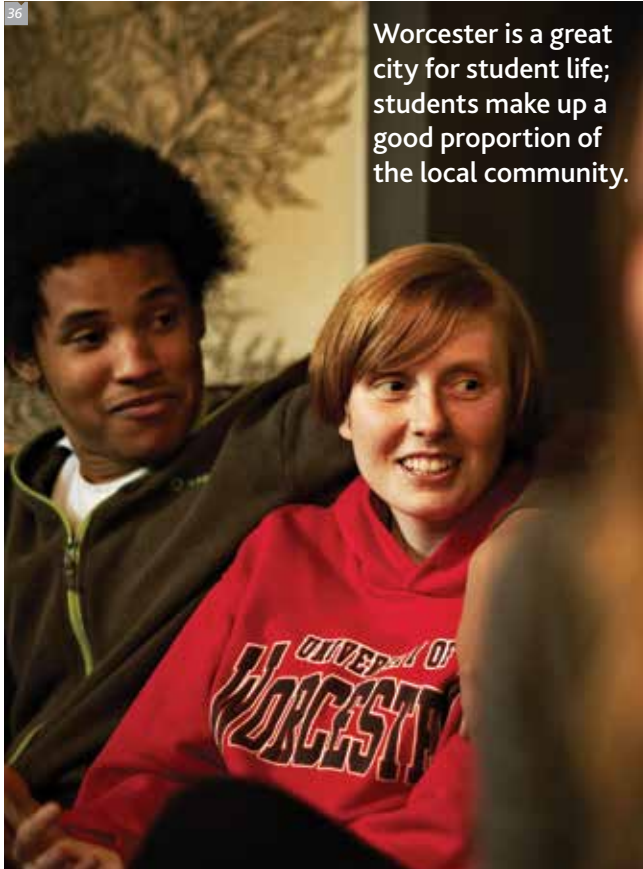
Chocolate Deli

29 Here you can buy hand made chocolate truffles and creations from the patisserie or take a traditional afternoon tea.

53 New Street, WR1 2DL, 01905 611324

PLACES TO CATCH UP WITH FRIENDS

We hope that you enjoy time to catch up with friends as part of your discovery of the city of Worcester.



Worcester is a great city for student life; students make up a good proportion of the local community.



Rock Café, St John's Campus

The Cardinal's Hat

33 One of the oldest pubs in Worcester, it dates back to at least the fifteenth century, with a typical Friar Street black and white façade.
 31 Friar Street, WR1 2NA,
 01905 22066

Kings Head, Sidbury

34 A modern bar and grill with a menu to suit everyone.
 67 Sidbury, WR1 2HU,
 01905 726025

The Firefly, Lowesmoor

35 A little way outside the city centre, The Firefly is dedicated to live music and DJ sets.
 54 Lowesmoor, WR1 2SE,
 01905 616996

Hand in Glove

36 A cool, student-friendly bar with an inviting, homely atmosphere.
 College Street, Town Centre, WR1 2LS,
 01905 612154



Friar Street

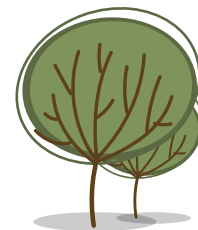
37 Black and white Tudor buildings line Friar Street – one of the city’s loveliest spots.

Reindeer Court

38 Small independent shops, little cafés and gift shops are clustered in Reindeer Court, near the city centre.

The Tything

39 There are lots of pubs, boutique shops and second-hand vintage stores along this street on the outskirts of the town centre.



PLACES TO WANDER

and watch the world go by.
Interesting streets with plenty of quirky shops...



Discounts!

With an NUS card, you can enjoy great discounts from major brands like Domino’s Pizza, Pizza Hut, 16-25 Railcard, Accessorize, Superdrug, Odeon and many more.

PLACES TO SHOP

Find all the leading shops as well as designer labels, independent boutiques and second-hand stores.



The Big Names

Primark, TK Maxx, Marks & Spencer, Next, House of Fraser, Debenhams, Jack Wills, H&M, River Island, Fat Face, Topshop, Monsoon and many more.

45 Stripes, Foregate Street



Vintage

40 Mealcheapen Street is the place to go for all things vintage. The street is lined with charity shops – perfect for picking up some second-hand bargains, finding a fancy dress outfit and supporting worthy causes.

Gifts

41 Looking for perfect presents? Cornucopia and New England Country Store are great places for unusual presents and Cath Kidston goodies. Rock Lobster specialises in designer jewellery, with exciting pieces by many of Britain's top contemporary designers.

Worcester Victorian Christmas Fayre

42 The Victorian Fayre in early December is very popular, with a carousel, music and rows of stalls selling produce, gifts and mulled wine. It's one of the busiest events in the city's calendar.

Grand Central, Birmingham

43 A 45-minute train journey from Worcester brings you to Birmingham, which has many shops in its Grand Central and Bullring shopping centres. The annual German Market is very popular with over 200 stalls.

Fresh Ingredients

44 Worcester has a lively market in Angel Place from Wednesday to Saturday. There are monthly farmers' markets in the region as well as international grocery stores. Lowesmoor is a great place to find independent shops selling ethnic ingredients.

Independents


45 Worcester has plenty of smaller independent fashion boutiques, like Stripes on Foregate Street and Fuel Clothing in Reindeer Court.

41 Gift shop



43 Shopping in Birmingham





“For just £12 you can purchase an NUS card and access over 100 exclusive discounts, online and on the high street, helping stretch your funds a bit further!”



46



The Hive is Britain's first joint university and public library.

UNIVERSITY SITES

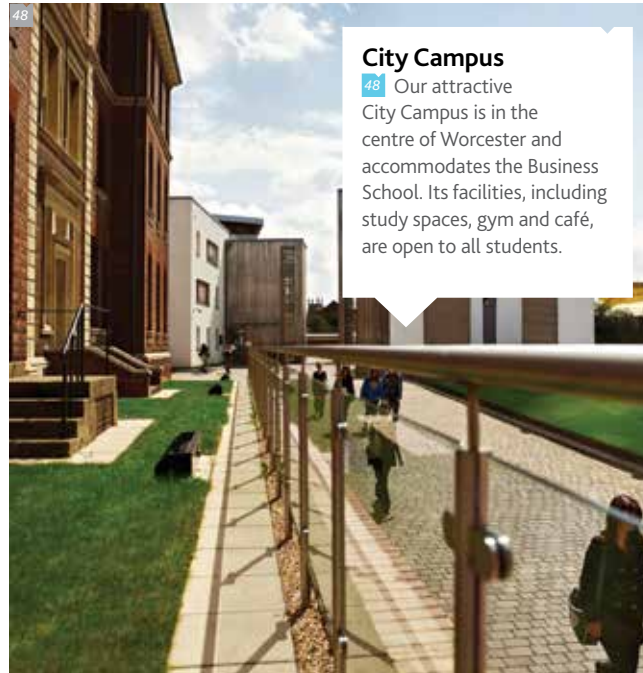
All our facilities are within a 20-minute walk of each other.

The Hive

46 With over a quarter of a million books and twelve miles of archive collections, The Hive is no ordinary library. It also has a busy events programme, with regular lectures, exhibitions and performances.

Riverside

47 Riverside is a facility providing space for sports, performance and dance as well as excellent social learning facilities.



48

City Campus

48 Our attractive City Campus is in the centre of Worcester and accommodates the Business School. Its facilities, including study spaces, gym and café, are open to all students.

Jenny Lind Building

49 Our newest building is placed right in the heart of the city centre. Home to the Research School, the facility features high quality teaching and learning spaces.

St John's Campus

50 St John's Campus is located in a residential area often referred to as 'the village in the city'. There are lots of shops and pubs nearby, as well as Sainsbury's and Co-op supermarkets.

The Garage

51 The University has transformed a former industrial building into fully renovated art studios, workshop facilities and lecture/performance space. The building also houses a research room, print presses and project space.

University of Worcester Arena

52 Opened in 2013, our 2,000 seat capacity Arena hosts live sporting fixtures and other events.

Lakeside Campus

53 The Lakeside Campus provides exciting opportunities for outdoor education, water sports and ecology-based research.

TRAVEL OPTIONS

Worcester's a compact city, so it's easy to get around on foot.



Bus

54 The main bus station, Crowngate, is in the city centre and buses run throughout the city. The 31 bus stops right on campus. Student tickets are available between St John's Campus, University Arena and Worcester City Centre on 31B/31E services. Academic year tickets for University students are available from Firstpoint.

Cycle Loan Scheme

55 Run by the University of Worcester, this is a great opportunity to contribute to the sustainability of the city. Keys and loan bikes are collected and returned to either St John's or City Campus. Membership costs £20 a year and includes a free cycle helmet.



Rent-a-car

56 For trips outside Worcester, you can rent a car from hire car companies in the city, such as Europcar, Avis or Hertz. Visit www.budget.co.uk to find the latest deals.



Rail

57 There are two railway stations in Worcester. The most central, Foregate Street Station, is right in the heart of the city centre, only a few minutes' walk to the main shopping centre and City Campus. Shrub Hill Station is about 15 minutes from the city centre and has frequent trains to London Paddington (takes around 2hrs 45mins), Birmingham New Street and Birmingham Snow Hill (both take around 45mins) and many other nearby towns. www.nationalrail.co.uk

Air

58 The closest airport to Worcester is Birmingham (39 miles/63km), with regular daily flights to and from many European and international destinations. Also nearby is East Midlands Airport (73 miles/118km) and Bristol Airport (71 miles/115km). You can get into Worcester city centre from there by train, coach or taxi.



If you are visiting the city:
 Halls of Residence are available for short stays during the summer months. Contact conferencing@worc.ac.uk or 01905 542121 or visit our website to find out more:
www.worcester.ac.uk/accommodation
 For a list of hotels and bed and breakfasts in the city, take a look at www.visitworcester.co.uk

PLACES TO STAY

If you're looking for somewhere to live, the University of Worcester provides guaranteed accommodation for students in University-managed accommodation if you apply before 31st May.

TAKE IN SOME CULTURE

Jump-start your creativity and explore some of the interesting sites, shows and acts in and around Worcester.



New Budapest Cafe Orchestra in the Shindig events programme

63

Final Year Degree Show

59 The final-year degree show for Art, Design and Creative Digital Media students takes place in late May and is open to members of the public.

Worcester Festival

60 This annual festival features a wide selection of professional and community events and activities to enjoy in the summer. See this year's line-up at www.worcesterfestival.co.uk

Worcester City Art Gallery and Museum

61 The city art gallery has regular exhibitions of contemporary art and the museum includes exhibits ranging from a 19th century chemist's shop to a Regimental Museum.

Cinemas

62 The main cinemas in Worcester are the Odeon and Vue, which are both in the city centre and offer student discounts.

Shindig

63 Run by the University and hosted by a network of over 50 venues and promoter groups, Shindig features live professional acts which attract community audiences as well as students and staff. Over the past few years, Shindig has also provided many opportunities for students to experience professional touring, meeting and working alongside artists and performers, marketing shows, selecting programmes and running front of house on the night. www.shindig.org.uk

Jinney Ring Craft Centre, Hanbury

64 Beautiful 200-year-old barns converted into 12 craft studio workshops, a falconry, daytime farmhouse restaurant, craft gallery and gift shop.

The Fold, Bransford

65 Several designer-makers and artists work at The Fold creating furniture, ceramics and artwork. Some of our design students have even exhibited work here.



Upton Jazz and Blues Festivals

66 Held in nearby Upton-upon-Severn, where several bands play jazz and blues during the three-day festivals.

The Swan Theatre

67 Enjoy a busy programme of live music and drama, including an annual outdoor Shakespeare production.

TAKE IN SOME CULTURE

Worcester Cathedral

68 The ancient Cathedral is a magnificent sight as it rises majestically above the River Severn. In addition to services, it holds a wide range of public events, including exhibitions, plays, workshops, lectures, concerts and festivals. Each year, they sponsor an artist in residence – including lecturers from the University.

Malvern Theatres

69 Housed in the Winter Gardens complex in Malvern town centre, this is a provincial centre for dramatic arts. It has a diverse programme of plays, films and music – with some big names – and regularly welcomes some of this country's leading productions from the West End, The Royal Shakespeare Company and The Royal National Theatre.

What's On Guide

70 The University creates a What's On calendar of events that include exhibitions, lectures, live music, film screenings and performances across campus.

Live Music

71 Venues promoting live music in the city include Huntingdon Hall, Drummonds and The Marrs Bar. Heroes is an eclectic alternative bar with a relaxed atmosphere, with live DJs in the back bar every weekend playing a variety of the best classic Punk, Rockabilly, old school Hip Hop, Rock'n'Roll, Electronica, Funk and Northern Soul.



68



The beauty and grandeur of Worcester Cathedral provides a magnificent setting for the University of Worcester's graduation ceremonies.



PLACES TO LEARN ABOUT THE PAST

Find out all about Worcester's fascinating history at the city's many museums.

“MY IDEA IS THAT THERE IS MUSIC IN THE AIR, MUSIC ALL AROUND US, THE WORLD IS FULL OF IT AND YOU SIMPLY TAKE AS MUCH AS YOU REQUIRE.”

SIR EDWARD ELGAR

2 JUNE 1857-23 FEBRUARY 1934
ELGAR WAS AN ENGLISH COMPOSER, MANY OF WHOSE WORKS HAVE ENTERED THE BRITISH AND INTERNATIONAL CLASSICAL CONCERT REPERTOIRE

Born in the small village of Lower Broadheath, outside Worcester



72

Elgar Birthplace Museum

72 One of England's best known composers, Sir Edward Elgar, was inspired by the Malvern Hills and local area. He was born in the idyllic Worcestershire village of Lower Broadheath and the museum there shows a history of his life and music.

The Infirmary Medical Museum, City Campus

73 Now located at the University's City Campus, the museum showcases artefacts from the Infirmary and across Worcestershire, as well as exhibitions celebrating the history of the site. Worcester was one of the first cities outside London to have a voluntary hospital, which gives the museum access to over 300 years of medical equipment and rare books.

The George Marshall Medical Museum at the Worcestershire Royal Hospital is also free admission and is open 9am-5pm (last entries 4pm).

Photo below: Nurse Lucy Ford and a friend on the fire escape stairs at the former Worcester Royal Infirmary (now City Campus) in the 1930s. (Charles Hastings Education Centre, Worcester).



73

Tudor House, Friar Street

74 Over the past five centuries this building has been used as a work place for weavers, clothiers, tailors, bakers, painters and brewers. It's also been lodgings, the Cross Keys Inn, Cadbury's Tudor Coffee House, an air raid wardens' post and billet office, a school clinic and a museum. Pop along to see for yourself.

Worcester Porcelain

75 Home to the world's largest collection of Worcester Porcelain. The ceramic collections, archives and records of factory production form the primary resource for the study of Worcester porcelain and its history.

The Guildhall

76 A Queen Anne building, begun in 1722 by Thomas White, a pupil of Sir Christopher Wren. White himself is said to have carved the figure of Queen Anne over the entry, as well as those of Charles I and II, a reminder of the city's long history of royal support. The interior is superb, with exceptional Grand Italianate decoration and a good collection of portraits.

The Commandery, Sidbury

77 If you want to find out more about the 'Faithful City's' history, visit the Commandery for a major exhibition on the English Civil War.

The Hive

78 The University's library, The Hive, is right next to the City Campus. A joint venture between the University and Worcestershire County Council, The Hive is an exceptional £60 million facility. It is home to the Worcestershire Archaeology Service, which gives you access to a huge range of historical documents.

GET SPORTY

Worcester Warriors rugby club and county cricket at New Road are just some of Worcester's sporting highlights.



Worcester Dragon Boat Racing Club

79 Dragon boat racing is a team paddling sport, which has its roots in the ancient folk rituals of southern China. In modern times it has emerged as an international sport, and today one of England's largest Dragon Boat Clubs is based in Worcester, welcoming people of all ages. www.worcester-dragons.org.uk

Rugby

80 Worcester Warriors play in the rugby union premiership. They've also competed in the Anglo-Welsh Cup, European Rugby Cup, British and Irish Cup and Aviva A League.

Cricket

81 Worcestershire County Cricket Club was formed in 1865 and is one of the 18 major county clubs which make up English and Welsh domestic cricket. Its limited overs team is called the Worcestershire Royals, known unofficially by some fans as 'the Pears'. Its historic riverside site makes it one of the best appointed and most loved grounds in the world. www.wccc.co.uk

Basketball

82 Basketball plays a significant role in University life and the Worcester men's basketball team have been BUCS champions eight times. The University of Worcester Arena is also home to the Worcester Wolves, a highly successful professional club playing in the British Basketball League.

Horse Racing

83 With its picturesque tree-lined track and unique position on the banks of the River Severn, Worcester Racecourse is one of the oldest courses in Britain. www.worcester-racecourse.co.uk

Walking, Running and Cycling

84 The city centre boasts miles of safe paths for walking, running and cycling. The racecourse and river are great places to start.



Rowing

85 The city and university clubs support competitive rowing and sculling for all levels. They enter crews for domestic, national, and international events such as Henley Royal Regatta, and have an excellent record in competitions.

University of Worcester Arena

86 The University's Arena is big enough to accommodate three full basketball or netball games at the same time. Purpose-designed so it's accessible for people with disabilities, it has flexible seating for 2,000 and outstanding TV broadcasting facilities. The Arena hosts major regional, national and international events, as well as many indoor student sports competitions.

Riverside

87 There's a busy programme of fitness classes at this University facility (including Yoga and Zumba), with many of the sessions running in the evenings and at weekends.

McClelland Centre for Health and Wellbeing, City Campus

88 The high ceilings and tall windows make this fitness suite an airy, attractive space for exercise. The centre offers massage and sports therapy clinics, as well as advice on nutrition and acupuncture. Students living in Halls get free University gym membership.





EXPLORE THE OUTDOORS

Rural Worcestershire has a great reputation for its gardens and green spaces.

Gheluvelt Park, Barbourne Road, Worcester

89 Named as one of the best three parks in the UK, Gheluvelt Park commemorates the Worcestershire Regiment who fought at the Battle of Gheluvelt in October 1914. The park has received heritage lottery funding and the Victorian bandstand has been refurbished, along with play areas and water features.

Spetchley Gardens

90 This 30-acre Victorian garden is three miles east of Worcester and a great destination for a leisurely stroll. Generations of the Berkeley family have maintained the grounds, sourcing plants from every corner of the globe.



University of Worcester gardens

91 Awarded a silver gilt medal at the 2010 RHS Chelsea Flower Show, our low allergen garden is a sanctuary for hayfever sufferers and anyone looking for a tranquil spot on campus. There's a colourful pergola offering shade and shelter, with seating, small pools of water and carefully chosen plants. The roof is infilled with stained glass in steel blue, rich amber and purple, which reflects the changing light throughout the day and is picked up by the garden lighting in the evening.

The GeoGarden represents 700 million years of Earth History. The rocks tell a fascinating story of continental collisions, shallow tropical seas, coastal lagoons and swamps, hot deserts, vast ice sheets and polar deserts. The Garden is the result of a collaborative project undertaken by the University and the Herefordshire and Worcestershire Earth Heritage Trust.



River Cruises

94 Take in the stunning views from the deck of one of the many cruise boats on the Severn. Tickets cost £6 and the trip lasts about 45 minutes. www.worcestercruises.co.uk

Cripplegate Park

95 Located to the west of the city centre, opposite the County Cricket ground, this park has tennis courts and lots of seating areas. It's also a venue for events held throughout the year.

Little Malvern Court and Gardens

92 This 10-acre garden, attached to a former Benedictine Priory, offers magnificent views over the Severn valley. Laid out as garden rooms around the house, it features a water garden feeding into a chain of lakes. Beautiful in the spring with carpets of bulbs, there's also a fine collection of old-fashioned roses to see in June.

Knapp and Papermill Nature Reserve

93 Situated in the nearby village of Alfrick, this is a great place for a walk, especially in springtime when the bluebell woods are at their best. There's a good chance you'll spot a kingfisher near the stream as well as woodpeckers and butterflies.



Malvern Hills

96 The Malvern Hills have been described as a 'mountain range in miniature', with the eight-mile ridge containing some of the oldest rocks in Britain. You can enjoy over 3,000 acres of open countryside, climbing to the highest point at Worcestershire Beacon or enjoying quiet rambles along the wooded slopes. You can also try horse riding, mountain biking, orienteering or even hang gliding.

EXPLORE THE OUTDOORS



PLACES A LITTLE FURTHER AFIELD

Birmingham, Stratford, Malvern and Ludlow are just some of the interesting places near enough for a great day trip.

Stratford-upon-Avon

97 Visit Shakespeare's birthplace and enjoy one of the RSC productions in the lovely surroundings of Stratford. You can also visit Anne Hathaway's cottage, and Trinity Church, where Shakespeare was baptised.

Paintballing

98 The Kidderminster centre has over 200 acres of woodland and 15 game scenarios designed for groups of 15-20 players.

Deansford Lane, Kidderminster,
Worcestershire DY10 3NN
www.paintballpark.co.uk

Cadbury World

99 Chocolate lovers won't want to miss the chocolately delights of Cadbury World, near Birmingham, where you can tour fourteen zones to find out how chocolate is made. See their website for the latest offers.

Cadbury World, Linden Road,
Bournville, Birmingham, B30 2LU
www.cadburyworld.co.uk



West Midland Safari Park

100 Lions, tigers, elephants and penguins are just a few of the animals you'll see here. There's also a reptile enclosure, twilight bat cave and sea lion theatre.

West Midland Safari Park, Spring Grove,
Bewdley, Worcestershire DY12 1LF

Ludlow, Shropshire

101 A beautiful town, complete with a castle, the largest parish church in the country and a reputation for Michelin starred restaurants.



Warwick Castle

102 A stunning medieval castle about 45 minutes away from Worcester. It sits on a bend on the River Avon and was built by William the Conqueror in 1068.

Warwick Castle, Warwick,
Warwickshire CV34 4QU

Bristol, Cheltenham, Oxford and London

103 A direct train service from Worcester makes day trips to many cities relaxed and hassle-free.



The City of Oxford



MORE PLACES A LITTLE FURTHER AFIELD

Sea Life Centre, Birmingham

104 Over 1,000 creatures to see including sharks, giant turtles, Seahorses, otters and rays.

The Waters Edge, 3 Brindleyplace,
Birmingham, B1 2HL

Alton Towers

105 Alton Towers is perfect for thrill seekers looking for an adrenaline rush.

www.altontowers.com

Hay-on-Wye

106 Hay is world famous for its second-hand and antiquarian bookshops and for its annual literature festival.

www.hayfestival.org

Bicester Village, Oxfordshire

107 Spacious shops showcase fabulously discounted labels, from the leading fashion and lifestyle brands.



ANNUAL THREE CHOIRS FESTIVAL

In a tradition dating back almost three centuries, the cities of Gloucester, Hereford and Worcester continue to play host in turn, every summer, to the oldest surviving non-competitive music festival in the world.

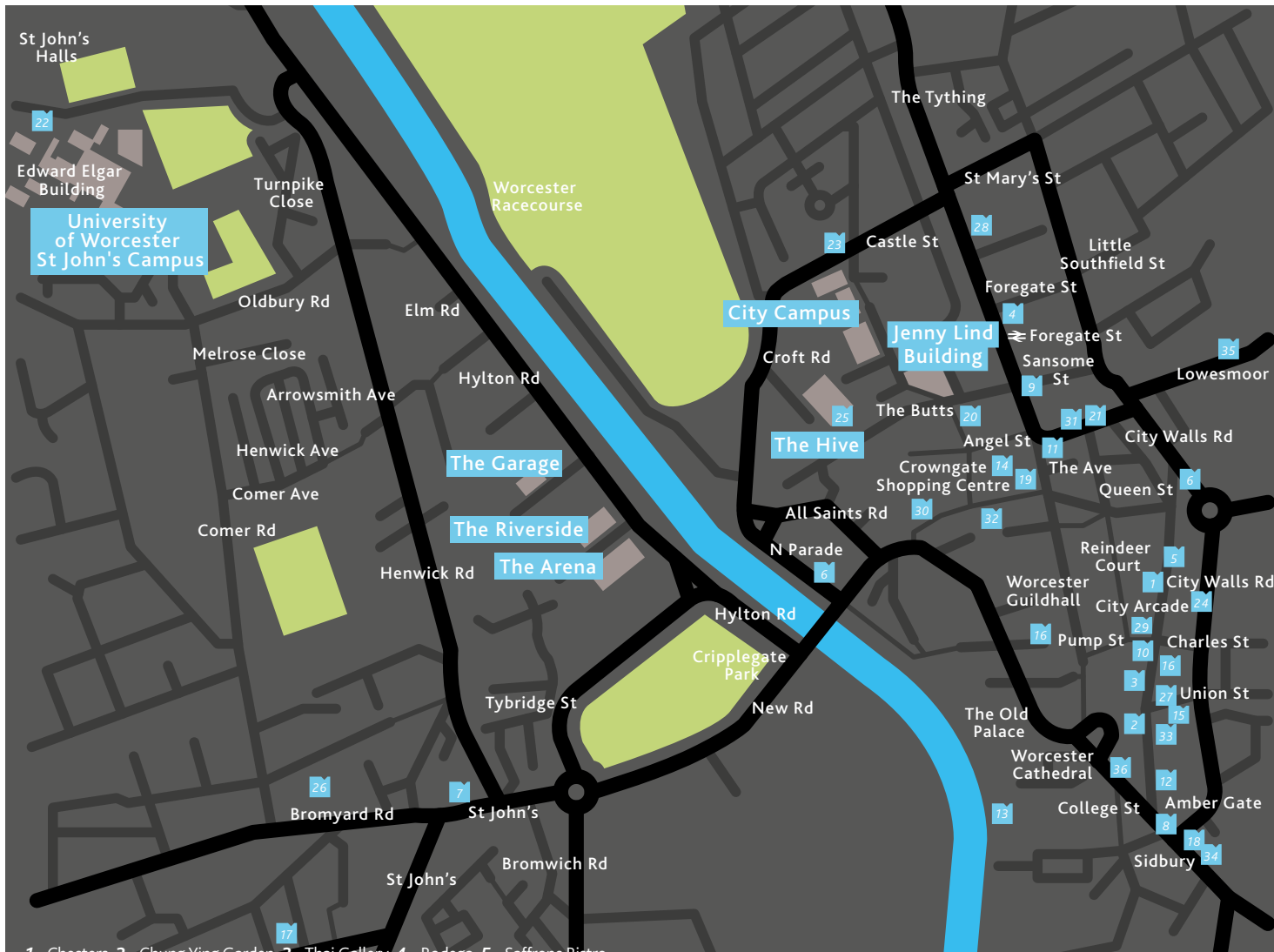
Photo credits

Page 8 – Burgerworks

Page 33 – Charles Hastings Education Centre, Worcester

Page 41 – bottom photo – Visit Oxfordshire

Page 43 – Derek Foxton



1 – Chesters, 2 – Chung Ying Garden, 3 – Thai Gallery, 4 – Bodega, 5 – Saffrons Bistro, 6 – The Old Rectifying House, 7 – Delhi 6, Pasha, Spice Cuisine, 8 – Benedictos, 9 – Flames World Buffet, 10 – Burgerworks, 11 – The Slug and Lettuce, 12 – Nando's, 13 – Diglis Hotel, 14 – Bill's, 15 – G&Tea, 16 – Ginger Pig Café, 17 – Ruby Cantonese, 18 – Primo Bar & Dining, 19 – Coffee Dough, 20 – Francini Café de Colombia, 21 – Creams Café, 22 – The Pear Tree, 23 – Starbucks, 24 – Pappa's Caffè, 25 – The Hive Café, 26 – MFA Bowl, 27 – Mac & Jac's Café Deli, 28 – The Balcony Café, 29 – Chocolate Deli, 30 – Boston Tea Party, 31 – Caffè Bolero, 32 – Patisserie Valerie, 33 – The Cardinal's Hat, 34 – Kings Head, 35 – The Firefly, 36 – Hand in Glove

**PLACES
SO GOOD,
WE HAD
TO SHARE**

All our sites are within an easy 20-minute walk of each other and of Worcester city centre.



We are already thinking about next year's guide. If you've got any tips that you think we should include, get in touch with us via communications@worc.ac.uk

The venues in this guide were chosen for being interesting and friendly – and for being the types of places that make our students feel at home. Nobody has paid to be in this guide and there are lots of good places that we just didn't have space to include. To find out more about life in Worcester, see www.visitworcester.com



University of Worcester
Henwick Grove
Worcester WR2 6AJ

www.worcester.ac.uk