

+44 (0)1905 855000

www.worcester.ac.uk

-  Stair case
-  Lift
-  Toilet
-  Disabled toilet



In Charles Hastings Building all room numbers are prefixed with: **CH**

All rooms then have a prefix identifying the floor followed by a 3-digit number, e.g. **007**.

On the lower ground floor rooms start with **LG**, e.g. **LG007**.

On the ground floor rooms start with **G**, e.g. **G007**.

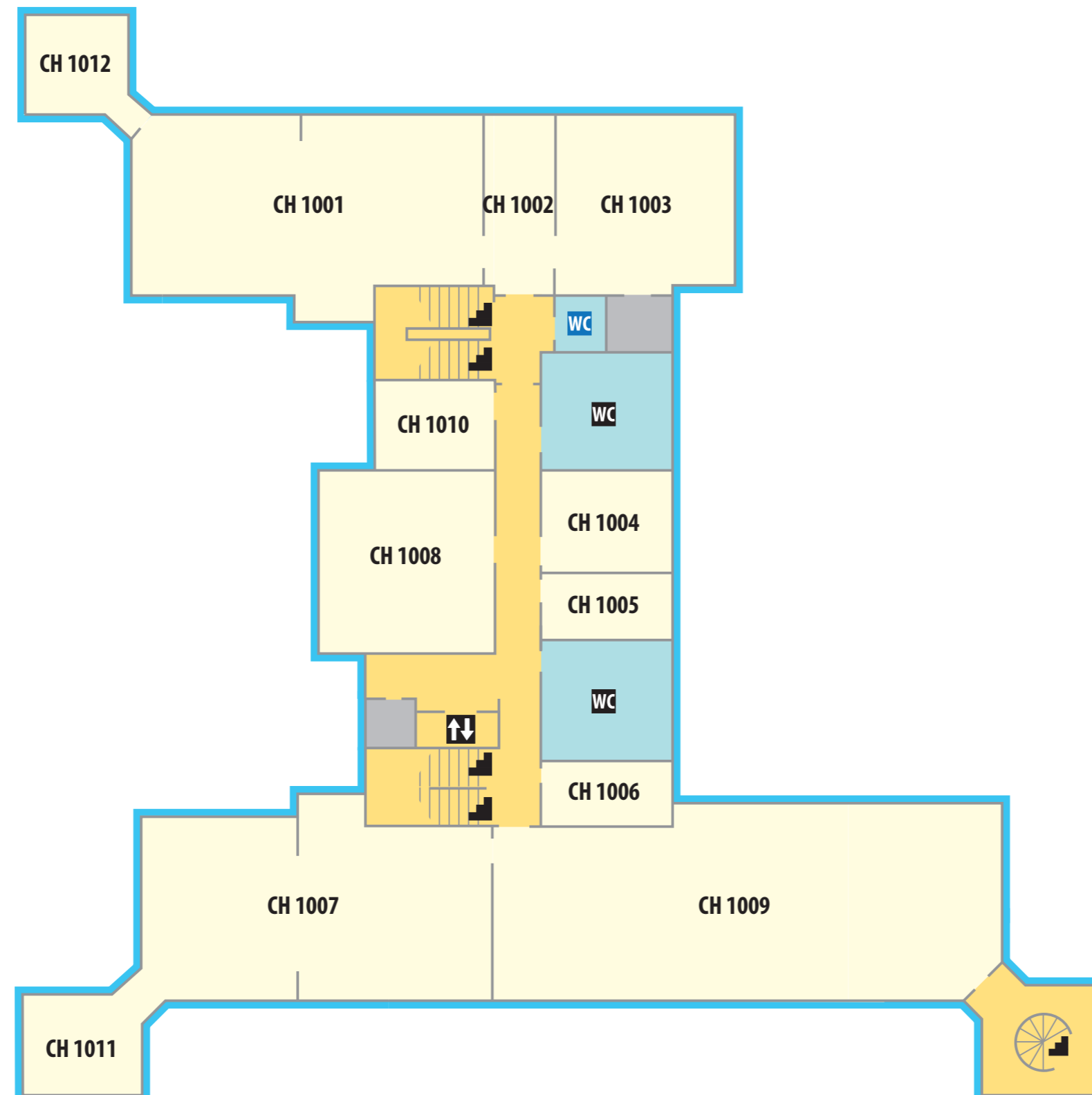
On the first floor rooms start with **1**, e.g. **1007**.

On the second floor rooms start with **2**, e.g. **2007**.

 Disabled parking (8 spaces)

+44 (0)1905 855000

www.worcester.ac.uk



-  Stair case
-  Lift
-  Toilet
-  Disabled toilet

In Charles Hastings Building all room numbers are prefixed with: **CH**

All rooms then have a prefix identifying the floor followed by a 3-digit number, e.g. **007**.

On the lower ground floor rooms start with **LG**, e.g. **LG007**.

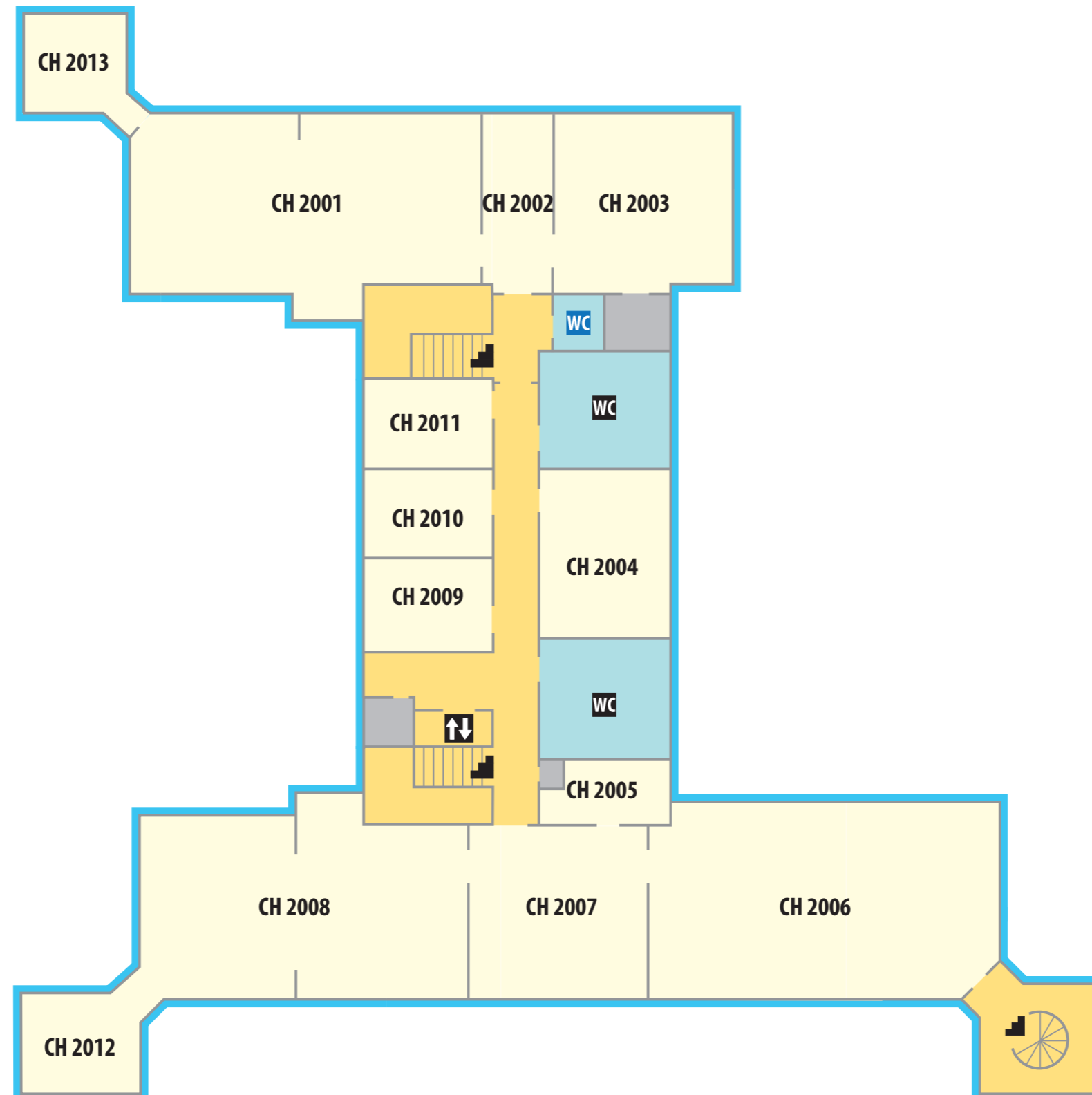
On the ground floor rooms start with **G**, e.g. **G007**.

On the first floor rooms start with **1**, e.g. **1007**.

On the second floor rooms start with **2**, e.g. **2007**.

+44 (0)1905 855000

www.worcester.ac.uk



© MAPgrafix 2015

In Charles Hastings Building all room numbers are prefixed with: **CH**

All rooms then have a prefix identifying the floor followed by a 3-digit number, e.g. **007**.

On the lower ground floor rooms start with **LG**, e.g. **LG007**.

On the ground floor rooms start with **G**, e.g. **G007**.

On the first floor rooms start with **1**, e.g. **1007**.

On the second floor rooms start with **2**, e.g. **2007**.

-  Stair case
-  Lift
-  Toilet
-  Disabled toilet